

Feathercrest and Stone Ridge Lift Stations Upgrades Phases 1 & 2 Thousand Oaks & Wetmore

Eduardo Anzueto, P.E.

Project Engineer

Stella Manzello

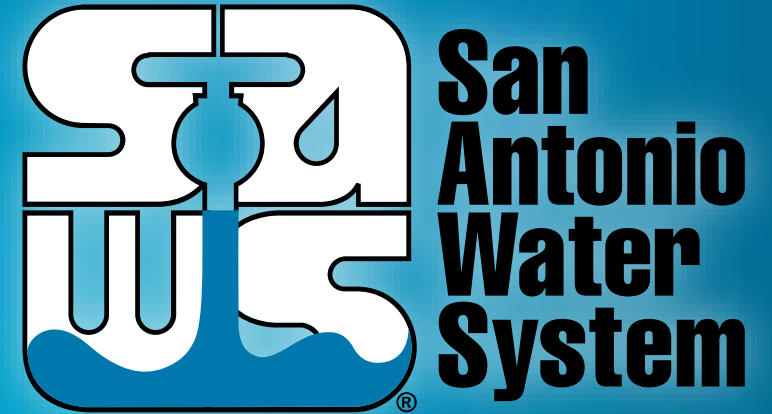
Contract Administrator

Marisa Palmer, P.E.

Manager – Engineering

Marisol Robles

SMWVB Program Manager



Non-Mandatory Pre-Bid Meeting

Tuesday July 30, 2019

MAKING SAN ANTONIO
WATERFUL



Oral Statements

- Oral statements or discussion during the pre-bid meeting today will not be binding, nor will it change or affect the terms or conditions within the Plans and Specifications of these Projects. Changes, if any, will be addressed in writing only via an Addendum.

Agenda

- General Information
- Small, Minority, Women and Veteran-Owned Business (SMWVVB Requirements)
- Contract Requirements
- Bid Packet Preparation
- Statement of Bidder's Experience
- Addendums
- Contract Solicitations Website – Recent Changes
- Vendor Registration
- Bid Opening Dates/Time
- Technical Information

General Information

- Non-Mandatory pre-bid meeting
- This presentation and the sign-in sheet will be posted on SAWS website
- The Construction estimate is \$8,464,249.00
- Construction services being procured through IFB
- Geotechnical Data Report available on the website

Aspirational SMWB Goal

Industry	SMWB Goal
Construction	20%

The aspirational SMWB goal is 20% of your total bid price.

Accepted SMWVB Certification Agency

- **South Central Texas Regional Certification Agency**
(Includes the Texas Historically Underutilized Business “HUB” Program)

Minimum Qualifications for SMWVB recognition:

- SBE-Certified (even MBEs and WBEs)
- **Local office or local equipment yard**

Accepted SMWVB Certifications

- Minority Business Enterprise (MBE) (Includes AABE, ABE, HABE, and NABE)
- Small Business Enterprise (SBE)
- Woman-owned Business Enterprise (WBE)
- Veteran-owned Business Enterprise (Tracked)

Good Faith Effort Plan (GFEP) FAQs

- **Q: Is the 20% SMWB goal mandatory?**

A: No, but we ask prime contractors to do their best with good faith outreach efforts. If the goal is not met, proof of outreach efforts is required with the submittal.

- **Q: What if I am having trouble finding SMWB subcontractors?**

A: Please email the SMWVB Program Manager with the scopes of work you are seeking. You will receive lists of local SMWVB-certified firms to contact.

- **Q: What if my business is SMWB-certified? Do I need to find SMWB subs?**

A: If your firm is SMWVB-certified, you will most likely meet the goal. However, the GFEP is a required document, and a good faith outreach effort is still necessary.

- **Q: Do I need to include all my subcontractors in the GFEP or just those that qualify towards the SMWB goal?**

A: All subcontractors need to be included in the GFEP, even those that may not count towards the SMWB goal.

- **Q: What if I have questions about the GFEP?**

A: Please contact the SMWVB Program Manager at 210-233-3420, or at Marisol.Robles@saws.org. GFEP questions can be asked at any time before the submittal is due.

Post Award: Subcontractor Payment & Utilization Reporting (S.P.U.R.) System

1. Subcontractor & Supplier Payment Tracking
2. Subcontractor and Supplier Additions or Substitutions
3. LCP Tracker
4. Must be Current and Accurate before Retainage is released

<https://saws.smwvb.com>



Contract Requirements

Prevailing Wage Rate and Labor Standards – Section 2.10 of the General Conditions

- Certified payroll to be submitted on weekly basis
- Wage decisions are included within the specifications
- Contractors to utilize LCP Tracker
- Site visits are random and unannounced
- Interviews will be Conducted and will be private & confidential
- Payroll records are subject to review
- All apprenticeship programs will need to be approved by Department of Labor prior to starting
- Contractors are responsible for sub-contractor payroll
- Late payrolls delay contractor payments from SAWS

Contract Requirements

- Insurance requirements are found in Section 5.7 of the GCs
 - Builder's Risk is replaced by Installation Floater (see Supplemental Conditions)
 - Maintain insurance coverage during the construction of this Project
- Selected contractor must be compliant with all other contracts in order for SAWWS to award the contract
- Compliant prior to executing the contract
- Will ask for insurance prior to Board award to expedite execution of the contract

Bid Packet Preparation

- Utilize the Bid Packet Checklist within the specifications
- Company information packet, statement regarding ability to complete the project, and W-9 also to be included by all Bidders
- Double check all mathematical calculations and verify all extensions
- Addendums are now acknowledged on the Bid Proposals
- Ensure Mob and Prep of ROW do not exceed the percentage

Statement of Bidder's Experience

- Statement of Bidder's Experience must be completed and included by all Bidders
- Bidder should use the checkboxes to confirm that the similar projects meet the requirements
- Requirements vary for all 6 project references
- Point of contact should be the Owner (not the design engineer)
- Reference contact information should be verified prior to submitting

Statement of Bidder's Experience

Project completed by Bidder	Requirements
Project A-1	<ul style="list-style-type: none">• Demonstrate construction of 24-inch or larger gravity sanitary sewer pipeline.• Include a minimum of 5,000 LF of pipeline, including manhole to manhole open-cut segments at depths from 25 to 30 ft.• Include construction within City of San Antonio Arterial Street Right-of-Way.• Completed between 2014 and 2019.
Project A-2	<ul style="list-style-type: none">• Demonstrate construction of 24-inch or larger gravity sanitary sewer pipeline.• Include a minimum of 5,000 LF of pipeline, including manhole to manhole open-cut segments at depths from 25 to 30 ft.• Include construction within City of San Antonio Arterial Street Right-of-Way.• Completed between 2014 and 2019.

Statement of Bidder's Experience

Project completed by Bidder	Requirements
Project A-3	<ul style="list-style-type: none">• Demonstrate construction of 18-inch or larger force main.• Include a minimum of 1,000 LF of HDPE force main installed by open-cut methods.• Include construction within City of San Antonio Arterial Street Right-of-Way.• Completed between 2014 and 2019.

Statement of Bidder's Experience

Project completed by Bidder or Bidder's Proposed Subcontractor	Requirements
Project A-4	<ul style="list-style-type: none"> • Demonstrate pipeline installation using jack, bore, or tunnel methods (minimum 60-inch diameter steel casing or liner). • Include bore pits within City of San Antonio Arterial Street Right-of-Way. • Completed between 2014 and 2019.
Project A-5	<ul style="list-style-type: none"> • Demonstrate pipeline installation using jack, bore, or tunnel methods (minimum 42-inch diameter steel casing pipe). • Include construction within TxDOT Right-of-Way. • Completed between 2014 and 2019.
Project A-6	<ul style="list-style-type: none"> • Demonstrate pipeline installation using jack, bore, or tunnel methods (minimum 42-inch diameter steel casing pipe) • Trenchless crossing shall demonstrate experience with Union Pacific Railroad crossing requirements. • Completed between 2014 and 2019.

Addendum(s)

Revisions, Clarifications, Questions and Answers (Q&A's)

- Questions deadline is August 8, 2019 by 4 P.M.
- Q&A's will be posted on SAWWS website on August 13, 2019 by 10:00 A.M.
- Check our website regularly for the addendum posting.
- It is possible to have multiple addendums during the time frame in addition to the scheduled final addendum

Contract Solicitations Website – Recent Changes

- To locate the Contract Solicitations website choose Resources
- At the drop down menu choose Contract Solicitations.
- Menu for the most part be identical to previous version

[Pay Bill](#)[Start-Stop Service](#)[Report Water Waste](#)[Español](#)[About SAWS](#)[Resources](#) ▼[Work With Us](#) ▼[Sign In / My Account](#)

Year Round Watering Hours / Aquifer Level: 674.9 Updated 7/25/19

Business Center

Resources for vendors, contractors and partners




Feathercrest and Stone Ridge Phases 1 & 2, Thousand Oaks and Wetmore

Contract Solicitations Website – Recent Changes


- Choose the specific project
- The following buttons are now located under the advertisement:
 - Notify Me
 - Plan Holder’s List
 - Downloads
 - Plans
 - Specs
 - Addendums
 - Geotechnical Report

Sealed bids will be received by Counter Services in the Customer Service office across from the Guard Station, 2800 U.S. Hwy 281 North, Customer Center Building, San Antonio, Texas 78212, **until 10:00 AM (CT), August 20, 2019**. Bids will then be publicly opened and read aloud by Contract Administration in CR-C137 Customer Center Building, 2800 U.S. Hwy 281 North, San Antonio, Texas. Each bid must be accompanied by a cashier's check, certified check, or bid bond in an amount not less than five percent of the total bid price.

→




**Non-Mandatory
Pre-Bid Meeting**
2:00 PM, Tuesday Jul. 30, 2019
San Antonio Water System Customer Service
Building, 2800 U.S. Hwy 281 N, San Antonio,
Texas 78212; Conference Room C-145



Notify Me
Receive updates sent straight to your inbox.


Subscribe




Plan Holders List
View plan holders list.

View List

Downloads

Specifications
Jul. 22, 2019
Note: You must be logged in to access this document. 

Plans
Jul. 22, 2019
Note: You must be logged in to access this document. 

Vendor Registration & Notification (VRN)

- Please register through SAWS Vendor Registration Program on the SAWS website at www.saws.org to ensure access to the latest information.
- To receive updates on specific projects, registered vendors must 'Subscribe' to the project by selecting the project, and clicking 'Subscribe' under the Notify Me box.

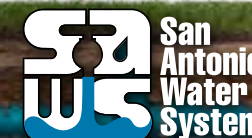
https://apps.saws.org/Business_Center/Contractsol/



Non-Mandatory
Pre-Bid Meeting

2:00 PM, Tuesday Jul. 30, 2019

San Antonio Water System Customer Service
Building, 2800 U.S. Hwy 281 N, San Antonio,
Texas 78212; Conference Room C-145



Bid Opening Dates/Times

August 20, 2019 at 10:00 AM

- Bids may not be late
 - Late bids will not be accepted and will be returned unopened
- Make arrangements if mailing and send directly to Contract Administration
- If delivering in person, bid packets will be turned in at Counter Services

Contact Information

<u>Contact Name</u>	<u>Title</u>	<u>Telephone Number</u>	<u>Email address</u>
Stella Manzello	Contract Administrator	210-233-3854	Stella.Manzello@saws.org
Marisol Robles	SMWVB Program Manager	210-233-3420	Marisol.Robles@saws.org

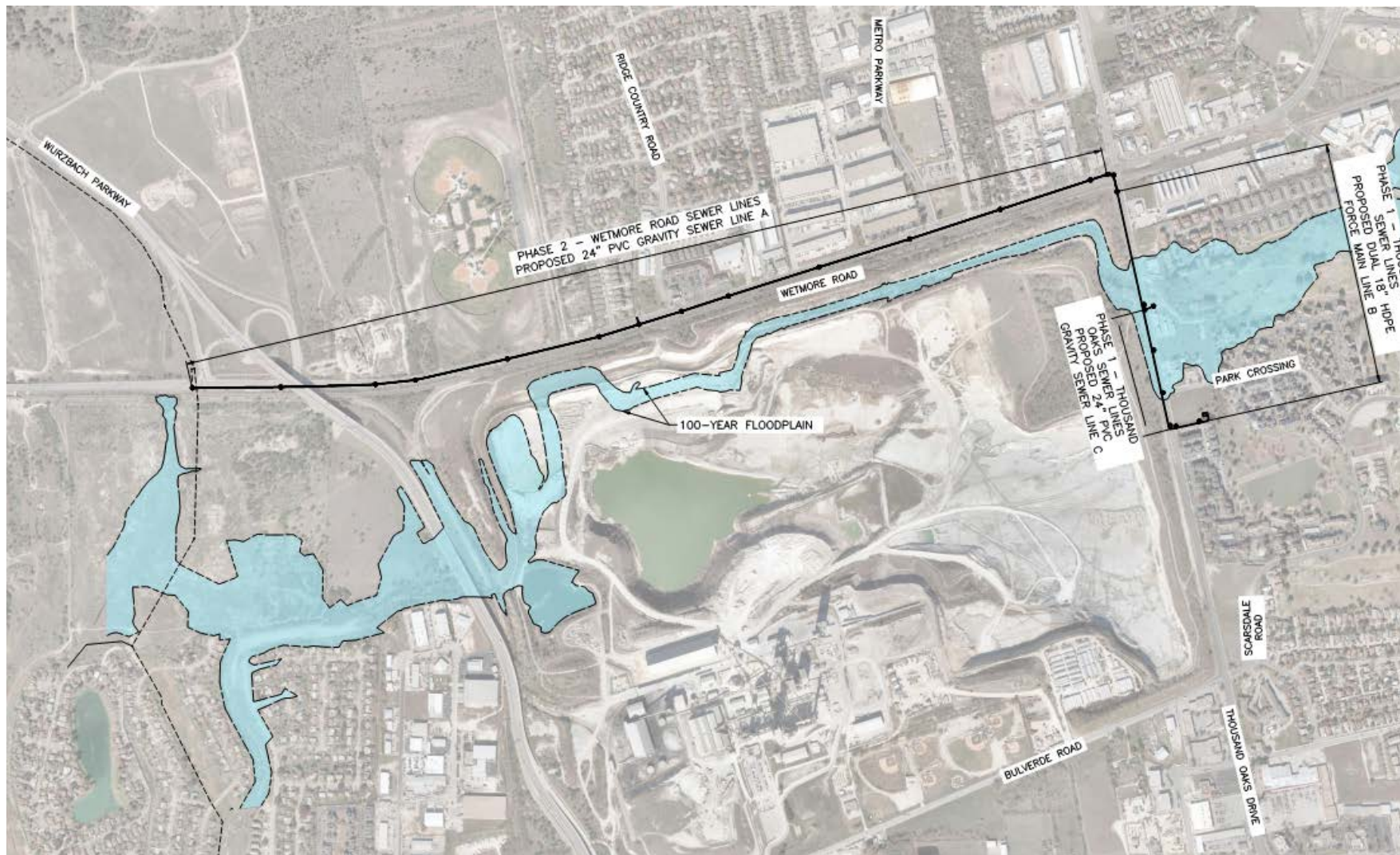
REMINDER

Please be advised that Bidders are prohibited from communicating with any other SAWS staff, the Consultant, the Developer, or City of San Antonio officials regarding this IFB up until the contract is awarded as outlined in the Instructions to Bidders

Project Overview

- Project will allow for the relocation of the existing Feathercrest Lift Station to outside of the 100-yr floodplain and the elimination of the Stone Ridge Lift Station on Wetmore.
- The project was split into 2 packages, with this initial package including the needed pipelines and a future package to include lift station construction and transfer of flow to the new system.

Project Limits



Feathercrest and Stone Ridge Phases 1 & 2, Thousand Oaks and Wetmore



Project Overview

- Includes approximately 9,477 LF of 24-inch PVC gravity sanitary sewer pipeline and fiberglass manholes, 4,810 LF of 18-inch HDPE force main sanitary sewer, 52 LF of 12-inch gravity sanitary sewer pipeline via open-cut and trenchless installation methods.

Project Overview

- Includes tunneling/boring under Union Pacific Railroad, culverts, and under Wurzbach Pkwy bridge consisting of various pipe sizes of PVC and HDPE pipe materials.
- Coordination with other projects will be required, including a City Bond road reconstruction project on Thousand Oaks
- SAWWS E-20 Segment I project will be on-going & Feathercrest and Stone Ridge Phase I will tie into MH-I installed by SAWWS E-20 contractor, coordination of TCP, MH installation, and pipeline installation shall be necessary.

Project Overview

- Traffic Control Plan and work zones are critical due to traffic volume, providing continuous access/service, & safety
- Numerous utility crossings; contractor shall verify utilities in advance of trenching. Contractor shall support and protect, and possibly adjust or relocate existing utilities.
- Trench width for 24" Gravity Line shall not exceed 8-ft width.
- Special provisions to mobilization specification provides for bid item for owner requested demobilization/mobilization.

Project Overview

- 125 LF trenchless crossing of the UPRR ROW/tracks. UPRR agreement has been signed and approved.
- CoSA Floodplain Development Permit has been approved.
- CoSA Tree Permit has been approved. Approved tree removals are shown on drawings.
- The construction estimate is \$8,464,248.00
- Completion is scheduled for 410 calendar days

Supplemental Conditions

- Contractor shall perform the work with its own organization on at least 40% of the total original contract price.
- Liquidated damages will be assessed at \$1,800.00 per day
- Bidder shall provide a baseline schedule with bid. Bidder shall incorporate the required project phasing/sequencing detailed in the Special Conditions section.

Special Conditions

- Construction Phasing and Sequencing
 - The Owner requires that the work be sequenced and completed in four (4) phases, with Phases 1 and 2 summarized below.
 - Phases 3 and 4 will be completed under a separate contract.
 - The limits between the Phase 1 & 2 and Phase 3 & 4 Projects are indicated on the drawings.

Construction Phase	Diameter	Material	Length (LF)
PHASE 1 - THOUSAND OAKS SEWER LINES			
LINE C GRAVITY SEWER	24"	PVC	1,325
LINE B DUAL FORCE MAINS	18"	HDPE	4,450
LINE A-3 (INCLUDES UPRR CROSSING)	24"	PVC	187
PHASE 2 - WETMORE ROAD SEWER LINES			
LINE A GRAVITY SEWER	24"	PVC	7,965
LINE A-2 (STUB-OUT CROSSING WETMORE)	12"	PVC	52
LINE A-4 (STUB-OUT AT INTERSECTION)	12"	PVC	<5

Special Conditions

- Bidder shall prioritize completion of the Phase I work to allow for the installation of the Phase I segments to be installed in advance of CoSA'S Transportation & Capital Improvements (TCI) 2017 Bond Project, which CoSA anticipates to begin January 2020.
- Line C shall be installed before Line B due to the depth of Line C and so that two-way traffic will be maintained along Thousand Oaks.
- Connection of downstream manhole of Line A shall be coordinated with E-20 project team.

Special Conditions

- The bidder should also consider:
 - Traffic control plan work zones (maintaining two-way traffic)
 - Accessibility for businesses, parking, bicyclists, and pedestrians
 - Potential night work at intersection, off duty officers for traffic control

Special Conditions

- Contractor shall provide project references to demonstrate successful completion of:
 - Open-cut installation of PVC wastewater gravity sewer main & HDPE wastewater force mains at similar depths.
 - Trenchless installation of PVC gravity sewer main & HDPE dual force mains.
 - Construction within CoSA's Arterial Street Right-of-Way.
 - Trenchless crossing under Union Pacific Railroad crossing.

Special Conditions

- Permits
 - SAWS will obtain the CoSA Floodplain Development Permit, CoSA Tree Permit, and TXDOT UIR Permit.
 - All other permits are the responsibility of the Contractor including, but not limited to the CoSA ROW permit, and TCEQ Stormwater Permit.
- TXDOT
 - The Contractor shall notify SAWS of anticipated work within TXDOT ROW at least 2 months prior to any work and shall notify the SAWS Inspector at least 2 weeks prior to any work within that TXDOT ROW (Wurzbach Parkway Bridge).

Special Conditions

- UPRR Permit
 - Union Pacific Railroad Agreement has been approved and signed.
 - This project has been assigned On-Site Observation during construction while on or under UPRR property.
 - Contractor is responsible for completing On-Site Observation requirements before a RailPros observer and a RailPros flagman can be on site.
 - Contractor shall procure and maintain the following insurance coverage: Commercial General Liability, Business Automobile Coverage, Workers Compensation and Employers Liability, Railroad Protective Liability, and all other insurances and requirements listed in Exhibit C of the UPRR agreement.

Project Background

- High traffic volume with numerous utility crossings and services
- Commercial, industrial, shopping centers, gas stations, car wash, residential neighborhoods, multi-family complexes, day care near/within project limits
- VIA bus route, school zones, & concrete flatwork repair will require agency coordination

Feathercrest and Stone Ridge Lift Stations Upgrades Phases 1 & 2 Thousand Oaks & Wetmore

Eduardo Anzueto, P.E.

Project Engineer

Stella Manzello

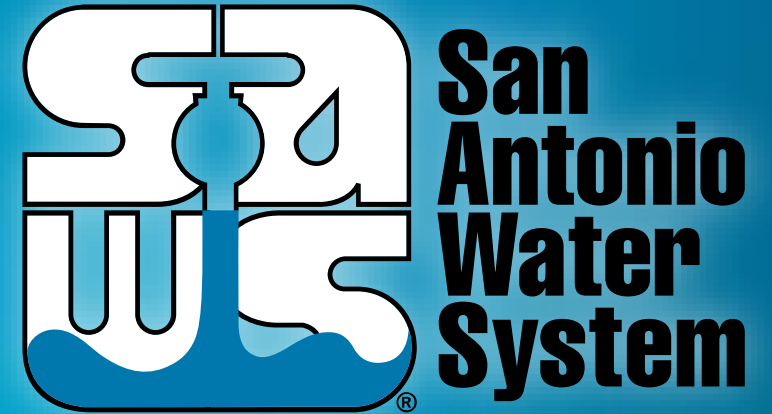
Contract Administrator

Marisa Palmer, P.E.

Manager – Engineering

Marisol Robles

SMWVB Program Manager



Non-Mandatory Pre-Bid Meeting

Tuesday July 30, 2019

MAKING SAN ANTONIO
WATERFUL

